

CAVE RESCUE ORGANISATION
www.cro.org.uk

RESCUE '26

Incidents attended during 2025

DONATIONS
APPRECIATED



Our thanks to  for their continued support

www.lyon.co.uk



CAVE RESCUE ORGANISATION
Clapham, North Yorkshire, LA2 8HH
email: secretary@cro.org.uk



Charitable Incorporated Organisation no 1201338



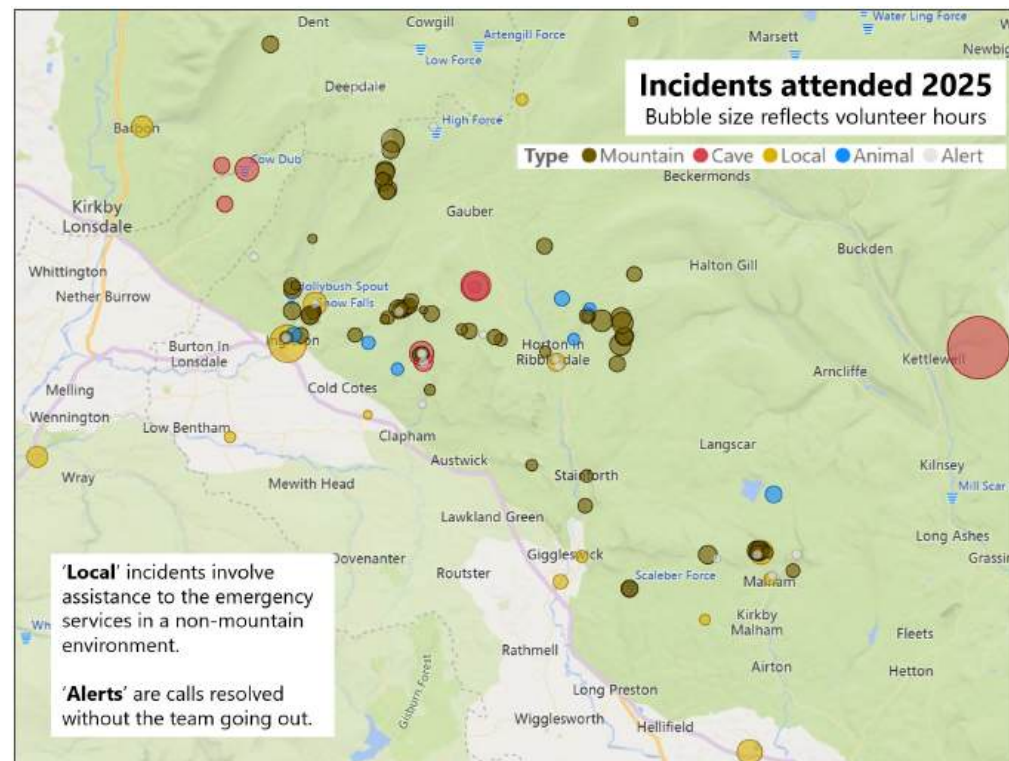
Thank you for picking up our report of the **96 incidents** we attended during 2025. I hope you find it interesting - and educational.

The number of call-outs for the CRO has remained fairly stable at around 100 a year over the last 5 years or so. This bucks the trend experienced by some teams in the Lake District and North Wales who have seen a significant increase in incidents over this period. We'd like to think that the folks who have the good sense to visit the Yorkshire Dales are applying that to their adventure planning! But don't be complacent - read our 'Pro tips' scattered though the report and help us keep the CRO volunteers back in our depot or their day jobs!

2025 was the **90th anniversary** of the formation of the Cave Rescue Organisation and since 1935 we have rescued **over 5,000 people**. There's an interesting piece on our history later in the report. Our role has changed over those years and although we are still the cave rescue team in the Three Peaks area, we are also the mountain rescue team. This dual function means we are larger than many other mountain rescue teams and our costs are higher as a result. The average cost of one of our call-outs is **over £1,000**, calculated from our annual expenditure including the upkeep of our depot, vehicles and equipment. The CRO team is made up entirely of volunteers. In 2025 alone, team members collectively gave **more than 4,500 hours** responding to rescue call-outs. This figure doesn't include the many hundreds of additional hours dedicated to training, preparation and administration that keep the team ready to respond when help is needed.

All of our running costs are met through **donations and team fundraising**. If you are able to support us, we would be extremely grateful. Details of how to donate can be found on the centre pages.

Martin Colledge
Chair, Cave Rescue Organisation



This map shows the locations of the incidents we attended in 2025. Each circle represents an individual call-out, with the size of the 'bubble' indicating how many volunteer-hours were expended. The map also gives a good impression of our area of operation, with one or two outliers where we have helped neighbouring teams in their areas.

The map reveals some of our incident 'hot-spots' around the summits of Pen-y-ghent, Whernside and Ingleborough, along with Malham Cove and the Ingleton Waterfalls Walk. These aren't necessarily dangerous places but they attract a lot of visitors.

Descent
The magazine of underground exploration
Written by cavers, for cavers since 1969
www.descentmagazine.co.uk

Cover photo: Stretcher evacuation from the summit of Whernside, September 2025 (Incident 79)

ABBREVIATIONS USED

- CRO 4:** CRO All Terrain Vehicle
MRT: Mountain Rescue Team (some also do cave rescue!)
NYP: North Yorkshire Police
RRPCPC: Red Rose Cave and Pothole Club
RRMT: Remote Rescue Medical Technician
UWFRA: Upper Wharfedale Fell Rescue Association (our neighbouring MRT to the east)
YAA: Yorkshire Air Ambulance
YAS: Yorkshire Ambulance Service

KEY TO INCIDENT TYPES

In the incident reports the following icons are used to indicate the nature of the incident. The grouped categories are used in the map graphic on page 3 and the statistical summaries.

- | | | | |
|--|---------------------|---|-----------------|
|  | Walking | } | Mountain |
|  | Fell running | | |
|  | Canyoning | | |
|  | Caving | } | Local |
|  | Animal rescue | | |
|  | Assist ambulance | | |
|  | Assist police | | |
|  | Assist fire service | } | Local |
|  | Alert | | |

'Alerts' are calls to CRO resolved without the team being deployed, so are not numbered as incidents in the report.

Incidents attended during 2025

All incidents are in North Yorkshire unless stated otherwise

JANUARY



01. Jan. 2nd Thu. 15.19
Pen-y-ghent

A walker (f, 31) slipped from a stile at Pen-y-ghent summit, sustaining a knee/lower leg injury that left her unable to walk off the hill. Team vehicles took members up to the top of Horton Scar Lane, then CRO 4 continued to the finger-post on Pen-y-ghent Side. After initial assessment and treatment, members requested a helicopter evacuation in the interest of patient comfort. They then carried the casualty by stretcher 300m uphill to where YAA could land. The helicopter flew the casualty to hospital while team vehicles took her companions to their car in Horton.



01



02. Jan. 4th Sat. 19:40
Ingleborough Summit

Two walkers (m, 25; f, 25) reported themselves lost and benighted on the summit plateau of Ingleborough. Having confirmed that they were at the summit shelter, the Duty Controller asked them to stay where they were and to keep as warm as possible. Team members drove from Storrs Common to Crina Bottom, then continued on foot to the summit and escorted the missing walkers down to Crina Bottom before driving them back to their car in Clapham.



03. Jan. 5th Sun. 09:30
Stainforth

NYP asked CRO to assist Settle Health Centre when nursing staff were unable to reach a vulnerable patient at home in Stainforth because of overnight snowfall. Team members used a team Land Rover to drive nursing staff to the patient.



04. Jan. 6th Mon. 07:34
B6255, Newby Head Moss, Ingleton

Following a heavy snowfall two men were reported to be lost in a broken-down vehicle between Hawes and Ribblesdale, having been there for eight hours. As the first team members arrived at the vehicle near the Newby Head road junction, they found that NYP officers had just arrived and both men were safe and well. After the car had been pushed back on to the road team members stood down, leaving the police officer and a helpful farmer from Newby Head Farm to jump-start the car.



05. Jan. 6th Mon (same day). 09:50
A farm near Horton in Ribblesdale

Returning from the previous incident, team members were asked to assist when a person suffered a medical incident at their home, believed to be inaccessible to a road ambulance, near Horton in Ribblesdale. Members stood by as a precaution until the YAS ambulance arrived and its crew took over care of the patient.



06. Jan. 8th Wed. 20:48
Scosthrop Moor, Settle

A car became stuck fast in a snow drift on the minor road across Scosthrop Moor above Settle. Neither the police nor any recovery organisation were able to assist the occupants. As the occupants were cold, two team members attended in a team Land Rover, using snow chains due to the conditions, and transported them to their nearby accommodation. The vehicle was left for them to arrange its recovery.



Pro Tip: Many higher minor roads can become impassable in winter conditions. Check conditions before travel or avoid high level routes.

Calling for help in an emergency

If you need help away from a metalled road:



Call 999 and ask for the police

Ask the police for Mountain Rescue

Follow the instructions given and keep your phone clear so that the rescue controller can call you back

If you no longer need help after calling 999, please call 999 again to let them know.



04



YORKSHIRE DALES GUIDES
 OUTDOOR ADVENTURES IN THE
 LAKES AND GALES

- Caving
- Climbing
- Abseiling
- Ghyll Scrambling
- Orienteering
- Gorge Walking
- Archery
- AND MORE.....







W: www.yorkshiredalesguides.co.uk
 E: info@yorkshiredalesguides.co.uk
 T: +44 (0)1729 824455





07. Jan. 9th Thu. 00:58

Newby

Following a fire at premises in Newby, local firefighters needed an Acrow prop to support collapsing stonework temporarily. When this could not be arranged through local builders, CRO was asked to help as the team has Acrow props for use in underground rescues. A member delivered a suitable prop to the site.



08. Jan. 11th Sat. 16:18

Great Close Scar, Malham Moor

Having rescued a number of sheep from easier places himself, a farmer asked for CRO's assistance in rescuing three sheep on Great Close Scar, overlooking Malham Tarn. The following morning, a small team met him and rescued the sheep by roping down from the top of the Scar and helping the sheep to descend safely into soft snow.



09. Jan. 12th Sun. 09:57

Storrs Common, Ingleton

A dog-walker (f, 50) slipped on ice on the riverside path at the bottom of Storrs Common, sustaining a suspected broken ankle. A YAS crew were first on scene and provided care to the casualty. After she had been given pain relief and her ankle had been splinted, team members helped the casualty into an insulated 'cas bag' and lifted her onto a stretcher. They then carried her to the road ambulance parked nearby.

DRY STONE WALLING FENCING & HEDGING ARBORICULTURE GRASS CUTTING	Matthew Holroyd 07724 735275
	Edward Wilson 07818 456161
	Ingleton and surrounding areas



10. Jan. 13th Mon. 14:56

Cam High Road, Widdale, Hawes

NYP asked CRO to assist the Montane Spine Race Safety Team with a runner who had sustained a lower back injury and required evacuation from an isolated location above Hawes. The location was near the junction of the operational areas of the three local MRTs. Following a discussion between team leaders, it was agreed that Swaledale MRT would collect the casualty and CRO members stood down.

Note: Initial treatment and support for the casualty until the Spine Safety Team arrived was performed by a CRO team member who was herself competing in the Spine Race and had been running for over 50 hours at the time.

Her selfless action helped the casualty to reach safety quickly and reflects the best of our outdoor community in action.



11. Jan. 19th Sun. 12:27

Diccan Pot, Selside, Horton in Ribblesdale

A caving group descending Diccan Pot reported that one caver (m) had been rigging the 30m first pitch of Diccan Pot when they heard a bang. When they pulled on the rope, they found that it was taut. Access to the first pitch is by a traverse, meaning that a person standing at the top of the

pitch cannot see down it. Concerned that their team-mate might be suspended on the rope, the group called for help. When the first CRO members reached the bottom of the pitch, they found the casualty lying there deceased. After the site had been recorded for police purposes, members lifted the casualty into a stretcher and hauled him to the surface.

Later, it was determined that he had suffered a medical event before he fell.

FATAL



12. Jan. 27th Mon. 18:23

Pen-y-ghent

A walker descending from Ingleborough to Horton in Ribblesdale told NYP that he had seen triple flashes of light repeatedly for 15 minutes from the summit of Pen-y-ghent. Small groups of team members walked the paths to and over the summit in rain and high wind, but nothing was found. Checks were also made for any aircraft or military activity in the area but were negative. A false alarm with good intent.

FEBRUARY



13. Feb. 8th Sat. 08:08

Wherside

A walker (m, 35) slipped and fell while descending from Wherside on the Three Peaks path. He sustained a painful ankle injury and was unable to continue. Team members responded and, after assessment of the injury and pain relief, team members splinted the casualty's leg and stretchered him down the hill to a waiting YAS ambulance.



14. Feb. 19th Wed. 13:07

Shorkley Hill, Malham

A walker (f) slipped on the muddy path from the top of Malham Cove to the Malham Rakes road, sustaining a knee injury that left her unable to stand. Other walkers took care of her small son and confirmed the location when the Duty Controller phoned to check. A team Land Rover drove to the casualty's location, and team members helped her into the back seat for transport back to Malham Youth Hostel.

Just as she was being assisted into the Youth Hostel, CRO Duty Controllers received "a new message...".



15. Feb. 19th Wed. (same day) 14:23

Pen-y-ghent

A caller from Poland reported her son and a friend 'scared and lost' on Pen-y-ghent. After some inquiries, team members who had been at Malham drove up Horton Scar Lane in team Land Rovers, while other team members waited on stand-by in case a more extensive search was needed. When the team was advised that an emergency tracker placed the two supposed missing walkers near Hull Pot, one vehicle continued up and confirmed that they were safe and well while the other vehicle returned to Clapham via Horton and Settle and waiting team members were stood down.





**Alert Only. Feb. 23rd Sun. 12:11
Ingleborough**

A group of lost walkers on the summit of Ingleborough contacted NYP for assistance, who called the team. As team members were preparing to respond, the lost group called NYP back and advised that they were being helped off the hill by other walkers.

MARCH



**16. Mar. 2nd Sun. 18:25
Big Meanie, Leck, Lancashire**

A caver (f, 20) was unable to exit Big Meanie. She had adequate food and equipment but did not know the alternate exit route via Death's Head Hole, so members of her party called for help. While the first team members prepared to descend Death's Head Hole and lead the missing caver out through that route, members of her original party were persuaded to return and try to assist her out of the exit. With their assistance, the casualty was able to exit Big Meanie. Team members assisted her party with de-rigging and then stood down.

it had survived the fall without apparent injury.

Note: Animal rescues are always high risk because the animal may not understand that the team is there to help, try to get away, and end up falling. The team usually waits at least 24 hours to give an animal a chance to self-rescue. In this case, the sheep had been stuck on the crag since the previous afternoon. Its location and pregnant condition made self-rescue very unlikely. Having discussed the risks with the farmer, a joint decision was made to attempt a rescue.



**17. Mar. 9th Sun. 11:45
Mealbank Quarry, Ingleton**

A local farmer asked the team to rescue one of his sheep from the rock face at Mealbank Quarry. Team members attended and set up a rope access system to lower two members to the sheep's location. Although team members tried to reassure the sheep as they approached, it attempted to escape and fell down the crag. The farmer checked the sheep and advised that



**18. Mar. 14th Fri. 09:36
Pen-y-ghent**

A walker (m, 30) fell a reported 10m including 'three somersaults' while climbing the final rock band at the south end of Pen-y-ghent, losing consciousness for approximately 30 minutes. His companion and other walkers helped to keep him warm until the team arrived. Team members assessed the casualty and immobilised him in a vacuum mattress before putting him into an insulated casualty bag and onto a stretcher. The only apparent injury was a slight laceration to the head. Meanwhile the YAA helicopter landed on the plateau between the two rock bands. After further assessment by YAA paramedics, the casualty was moved down to the helicopter for transport to hospital.



**19. Mar. 15th Sat. 14:16
Pot Scar and Smearsett Area,
Austwick**

Two walkers reported concern for another walker who appeared to be struggling and confused while trying to find a way off the steep ground

of Pot Scar and Smearsett Scar. A small 'hasty party' of team members ran round and over the area, but found no-one matching the struggling walker's description. After a brief further search, team members stood down.



**20. Mar. 16th Sun. 20:50
Dihedral Route, Gaping Gill, Clapham**

A caver (f, 20) was unable to ascend the final pitch on Dihedral route out of Gaping Gill and became stranded on the ledge. The group leader and a CRO Duty Controller discussed whether to have the group attempt a self-rescue, but the Duty Controller decided to call out the team. One team member descended to the ledge with a group shelter to keep the caver warm, while other team members rigged the pitch for hauling. Team members then hauled the caver up and out through the Jib Tunnel. After the caver had been assessed by a team medical professional, team members transported the group back to the CRO Depot for snacks and hot drinks.



Safety on the hills

Before you set out, Ask yourself three questions...

- 1 Do I have the right gear?**
- 2 Do I know what the weather will be like?**
- 3 Am I confident that I have the knowledge and skills for the day?**



Equipment:

Make sure you are well equipped for your planned activity. Even in summer consider:

- Warm, windproof and waterproof layers
- Hat, gloves and spare clothing
- Footwear with good tread
- Ample food and drink
- Map, compass, headtorch, phone
- First aid kit
- Survival bag



Weather:

Check the forecast for the day eg with the BBC or Met Office. MWIS has specific mountain forecasts for the Dales and other upland areas.

Remember that the weather can be dramatically different on the tops and can change a lot within a few hours.



Skills:

- Learn how to use a map and compass. Smart phone mapping apps are great but you need a backup if you run out of power.
- Learn how to call for help if needed - keep a phone with enough charge to do this.
- Learn basic first aid and how to perform CPR.
- Plan your route for the day and consider options in case you have to change plans.



Use this QR code to download a mountain safety leaflet from the Mountain Rescue England and Wales web site



21. Mar. 22nd Sat. 23:00

Ease Gill System, Casterton, Cumbria

A team member staying at the RRCPC caving hut at Bull Pot Farm advised that 8 covers (2m and 6f, 20-29) were overdue on the 'Ease Gill Traverse' caving trip between Lancaster Hole and Wretched Rabbit. NYP were also notified and asked the team to institute a search. In the meantime, RRCPC cavers staying at Bull Pot Farm did a rapid search and found the party safe but cold and tired close to Four Ways Junction. It seems they had become disorientated in this very complex system. With the benefit of rewarming, food and reassurance, the overdue cavers were escorted out via Wretched Rabbit by team members and the RRCPC cavers.



22. Mar. 30th Sun. 10:10

Rathmell

YAS requested assistance with a medical incident near Rathmell, believing that the casualty was in a location inaccessible to road ambulances. The first team member to arrive confirmed that YAS ambulances had been able to reach the location by another route and that the team's assistance was not required. **FATAL**

APRIL



23. Apr. 2nd Wed. 18:55

Ingleton Waterfalls Trail, Ingleton

A local walker (m, 79) was returning to Ingleton down the Waterfalls Trail when he felt weakness in his legs and was unable to continue. Team members from Ingleton, on their way to the regular monthly training evening, were diverted to render assistance and were joined by members already at the training session. The first team members met the walker and assessed him, then assisted him into a team vehicle and drove him back to his home in the village. Once back at home, he was assessed by the team doctor before being left in the care of his family.



24. Apr. 5th. Sat 16:45

Pen-y-ghent

A walker (f, 13) slipped and dislocated a kneecap whilst ascending Pen-y-ghent with her father. A hasty party went up the hill in CRO 4, with team Land Rovers taking more members up Horton Scar Lane as a precaution. After initial assessment and the administration of pain relief, a team nurse relocated the kneecap and splinted her leg. Team members then carried the casualty by stretcher to a team Land Rover for the drive down to Horton in Ribblesdale from where her father drove her to hospital.



25. Apr. 5th. (same day) 18:16

Nr Beezley Falls, Ingleton

While the Pen-y-ghent incident was still ongoing, NYP alerted the team that a canyoner (f, 17) had slipped from rocks into a pool near Beezley Falls and injured her shoulder. In considerable pain, she had been assisted to the bank by friends but was unable to get back onto the path and was becoming very cold. Some team members were diverted from the Pen-y-ghent incident. They located the casualty, gave her pain relief, and then evacuated her by stretcher to the nearby car park. YAS personnel then assessed her further before taking her to hospital for further treatment.

Quality Holiday Cottage

INGLETON

Friday – Friday

for two people – parking – wi-fi
one well behaved dog by arrangement

www.middlecottageingleton.co.uk

07870 103122



26. Apr. 7th Mon. 13:50

Malham Cove

A walker (m, 61) became faint and dizzy on the path up to the top of Malham Cove, so was unable to continue. After assessment by team members, he was assisted onto a Bell stretcher and sledged down to a team Land Rover waiting at the foot of the cove. The team then drove him into Malham and transferred him to the care of YAS paramedics for transport to hospital.



27. Apr. 8th Tue. 12:35
Malham Cove

YAS requested assistance after a walker (m, 51) became unconscious on the becks side path near the foot of Malham Cove. When the first team members arrived, the casualty was conscious and being treated by the YAS paramedics. Once they were content with his condition, team members helped him onto a stretcher and carried him to a team Land Rover for the short drive back to the YAS ambulance in the village.



28. Apr. 12th Sat. 16:39
Raven Ray, Thornton in Lonsdale

A visitor (f, 30) slipped near the top of the outward leg of the Ingleton Waterfalls Trail, injuring her ankle. She was unable to weight-bear or continue her walk. Team members treated the walker and stretchered her to a waiting YAS ambulance.



29. Apr. 12th Sat. (same day) 17:52
Nr. Gaping Gill, Clapham

Whilst team members were occupied on the Waterfalls Trail, a request was received to assist with a walker (f, 64) suffering a medical problem on the hill near to Gaping Gill. CRO 4 took a small team up to the casualty site while other members stood by at the CRO Depot in Clapham as a precaution. After assessment on scene, the walker was driven back to Clapham for further assessment by YAS paramedics before being taken to hospital for further investigation.



30. Apr. 14th Mon. 11:02
Scaleber Force, Nr Settle

A walker (m, 63) slipped below Scaleber Force, sustaining an ankle injury. Team members splinted the ankle, then stretchered the walker out of the steep and slippery gorge with ropes for security. The casualty was carried to a team Land Rover at the road head and driven to a friend's vehicle to go to hospital.



31. Apr. 20th Sun. 12:54
Malham Cove

A walker (m, 62) slipped going over a stile and tumbled a reported 12 feet, injuring his back. YAA paramedics were already on scene and providing care when team members arrived. Team members carefully assisted the casualty to the nearby helicopter, which flew him down to a YAS ambulance near Malham village.



32. Apr. 23rd Wed. 12:29
Nr Stainforth

YAS asked for assistance with a walker (m, 72) who was reported to have slipped down a crag near Stainforth, injuring his arm and ankle. As the team was assembling in Stainforth, YAS advised that the casualty had been able to get back up the crag and the paramedics on scene did not need the team's assistance to get him to the ambulance. The team stood down.



Alert Only. Apr. 23rd Wed. 22:23
Malham / Malham Moor

NYP asked the team to stand by for a possible incident in the Malham / Malham Moor area. The incident resolved without team members needing to deploy.



33. Apr. 24th Thu. 22:56
Nr Nick Pot Shooting Hut, Austwick

Two Three Peaks walkers (f, 23; f, 22) reported themselves benighted near the ruined Nick Pot shooting hut on the route down Ingleborough to Horton in Ribblesdale. The battery of one of their mobile phones was completely flat and the other was failing rapidly as they were using it as a torch to find their way over a rough section of the path. Two team members drove up Crummackdale and to within 100m of the walkers in CRO 4. They located the walkers and took them down to Crummack Farm for transfer to a team Land Rover for the drive back to Horton.

**WITH
YOU
FOR
OVER
50 YEARS**

**TRAINING EQUIPMENT
EXPERTISE**

Specialists in supplying equipment, training and technical expertise to support rescue form the most challenging of places.

www.lyonworkandrescue.co.uk



SHOP HERE

LYON
WORK & RESCUE



Apr. 26th Sat.
70th Three Peaks Race
– Pen-y-ghent, Whernside and Ingleborough

CRO members have for several decades provided rescue cover for competitors in the annual Three Peaks Race. They collaborate with a huge number of other volunteers from the Three Peaks Race Association and RAYNET – The Radio Amateurs Emergency Network – to ensure the safe return of the competitors and others met along the route. Times given are those at which team members were deployed from Horton.



34. 12:04
Horton Scar Lane, Horton in Ribblesdale

Team members collected a runner (f) with an ankle injury from the top of Horton Scar Lane (nr Hull Pot) in a team Land Rover and delivered her to the First Aid Post on the event field.



35. 12:27
High Birkwith, Horton in Ribblesdale

Team members collected a runner (f, 25) who had fallen near High Birkwith and sustained a head injury, returning her to the First Aid Post in a team Land Rover. A second runner (m, 36), who was unable to continue because of an ankle injury was also returned.



36. 13:36
Whernside

Race Control received a telephoned report



37. 14:45
Ingleborough

A runner (f, 31) fell on Ingleborough summit, injuring her right lower leg. The cuts were bandaged and she was assisted down to Little Ingleborough with the help of two race marshals. With the benefit of local knowledge, CRO 4 had reached Little Ingleborough and transported the casualty down to an event ambulance on the Clapham – Ingleton Old Road.



38. 15:05
Sulber Nick, Horton in Ribblesdale

NYP and RAYNET reported separately that a runner (m, 60+) had fallen while descending Sulber Nick. He made it as far as the junction of Sulber Nick with Clapham Lane and was sheltered in a RAYNET vehicle. In addition to cuts and abrasions, he had sustained an open fracture to a finger which was bleeding profusely. Following care from a CRO team member, the runner transferred to a team Land Rover and was taken down to the First Aid Post on the event field.

Escapebike shop
Catering for all your Road, MTB, Hybrid e.bike and analogue needs
Sales and Workshop

TEL: 015242 41226
 web: escapebikeshop.com
 Email: sales@escapebikeshop.com
 Kirksteads, Westhouse, Ingleton, LA63NJ

MAY



39. May 1st Thu. 22:26
Nr Horton in Ribblesdale

Four Three Peaks walkers reported themselves lost on the descent from Ingleborough to Horton in Ribblesdale. However, with limited phone coverage, initial attempts to pinpoint their location electronically were unsuccessful. Eventually the party were able to provide a grid reference, which established their position. As the team assembled to go up and guide them down, the lost party found the path and completed their walk safely.



40. May 3rd Sat. 10:59
Pen-y-ghent

NYP requested assistance when a walker (m, 50) was reported to be experiencing a medical event on the summit of Pen-y-ghent. Paramedics from North West Air Ambulance attended but were unable to revive the casualty. Team members assisted in transferring him to the helicopter before accompanying his family members back down the hill. The helicopter flew the casualty to Rainscar, where team members helped carry him to the waiting land ambulance. **FATAL**



41. May 7th Wed. 20:48
Nr Snow Falls, Ingleton

A walker (f, 22) slipped on the return leg of the Waterfalls Trail, injuring her right ankle. Team members treated the injury, then stretchered her to a team Land Rover. This returned her to the party's own vehicle in the trail car park so that friends might take her to hospital.

Knight Stainforth Hall
 Camping & Caravan Park

AA
 RAC
 B&B

Tents | Caravans | Motorhomes
GET IN TOUCH
 Seasonal Touring & Holiday Homes

01729 822200
 WWW.KNIGHTSTAINFORTH.CO.UK



Burn Moor Hideaway

Luxury Glamping pods in the Yorkshire Dales.
Opening Summer 2026

A new luxury glamping retreat by a local couple, with strong ties to the caving community. One half of the team is an active caver and on the CRO covers list, creating a place shaped by a genuine love of the Dales.

Follow us on Facebook

www.burnmoorhideaway.co.uk

stay@burnmoorhideaway.co.uk



42. May 10th Sat. 12:09
Wherside

A walker (f, 54) sustained an ankle injury whilst descending the summit ridge from Wherside. She was unable to bear weight on the injured leg, so could not continue walking. Team members located the casualty, splinted the ankle, and stretchered her down to a team Land Rover waiting near Bruntscar. She was reunited with her friends for transport to hospital for further treatment.



43. May 10th Sat. (same day) 15:16
Nr Manor Bridge, Thornton

A walker (m, 85) slipped down a bank and sustained injuries to his face and hands near Manor Bridge on the outward leg of the Ingleton Waterfalls Trail. Other visitors had helped him back up to the path when team members arrived. The casualty's injuries were treated and, after a further assessment of his condition, it was determined that he could walk back to the car park with assistance so that a family member could take him to hospital.



Alert Only. May 17th Sat. 20:24
Stile Pot, Gaping Gill Area, Clapham

Two cavers were reported significantly overdue on a trip into Stile Pot. As the Duty Controller placed underground members on standby and gathered further information, NYP called back to advise that the missing cavers were out of the cave and safe.



42



44. May 22nd Wed. 11:00
Hull Pot, Horton in Ribblesdale

A member of the public told NYP about a lamb seen in the bottom of Hull Pot, on the side of Pen-y-ghent. As the lamb was in no immediate danger, rescue was deferred to the evening. One team member descended into the pot to rescue the lamb and, once on the surface, it ran off to join the rest of the flock.



45. May 25th Sun. 14:06
Gritstone Pot, Ingleborough

NYP received a report of a sheep having fallen down Gritstone Pot. When the Duty Controller spoke to the reporting person it transpired that there was also a second sheep down Boggarts Roaring Hole, but some cavers who were planning to go down that cave were intending to try and rescue it on their way.

A small team headed up to Gritstone Pot in CRO 4. On arrival they found that two cavers had indeed rescued the sheep from Boggarts and were starting to rig Gritstone Pot to help the sheep down there. Whilst the cavers descended, team members set up a haul system to recover the sheep back to the surface.

The team would like to thank the two public spirited cavers who gave their time to assist in this rescue after already rescuing another sheep on their own.



46. May 25th Sun. (same day) 20:32
Ingleborough

A Three Peaks walker was reported missing after he became separated from his friends on the descent from Ingleborough. CRO Duty Controllers met the reporting party and were making further enquiries when the missing walker turned up safe and well.



Alert Only. May 27th Tue. 16:55
Gaping Gill Area, Clapham

Members of the Bradford Pothole Club (BPC), who were running the annual Gaping Gill Winch meet, expressed concern for the welfare of a person in the vicinity. As the Duty Controller was making enquiries, the person in question was assisted from the area by members of the BPC. The team did not have to attend.



47. May 28th Wed. 11:00
Horton Scar, Horton in Ribblesdale

A farmer contacted a local CRO Assistant Controller, asking for help after one of his lambs fell down a small pothole off Horton Scar Lane. Having alerted the Duty Controller, the Assistant Controller and farmer reconnoitred the site. In the afternoon, a small team returned and one member descended to assist the lamb out. It was taken back down to the farm to be checked over.

Your local family owned Coach Operator

BIBBY'S OF INGLETON



Coaches & Minibuses available for private hire

Ring: 015242 41330

Email: enquiries@bibbys.co.uk Website: www.bibbys.co.uk




JUNE



48. Jun. 4th Wed. 10:59 Jackdaw Hill, Horton in Ribblesdale

A farmer reported that one of his sheep was trapped in a small pothole near the Pennine Way, North of Horton. Meeting the farmer, on site, members were confronted with a large sheep that was firmly wedged in a narrow shaft. After two hours of digging away soil and boulders, sufficient space was created for the animal to wriggle backwards, then, with 'combined tactics', the sheep was lifted and hauled to the surface, seeming none the worse for the ordeal.



48



01/1935 June 9th Gaping Gill Main Chamber, Clapham

A visitor (m, 60) sustained serious bruising when the bosun's chair in which he was being winched down the main shaft of Gaping Gill dropped a reported forty feet (12m) to the floor of the main chamber. It seems that the guideline had jammed and then suddenly released, causing the chair to drop on the slack winch cable which was still being paid out. The casualty was rescued in a Neil Robertson* stretcher and was attended by the local doctor from Austwick.

* The Neil Robertson stretcher was originally designed for rescuing injured sailors from the confines of ships. Constructed from laths and canvas, it was very compact when wrapped around the patient. The "Neil Rob" remained in service with CRO until only a few years ago, albeit modified by the addition of a full-length steel frame, footguard and helmet.



Saving lives above and below ground

2025 marked the 90th anniversary

of the Cave Rescue Organisation's formal incorporation in 1935,

prompted by a complex rescue in Gingling Hole the previous year. The rescue on 9th June 1935 was the first for the new team and over the next 13 years there was an average of one rescue per year.

In these early years the CRO dealt only with cave rescues but in 1961 it merged with the Ingleton Fell Rescue Team to provide a unified body for cave and fell rescue.

The number of call-outs above ground steadily increased, overtaking the number of cave rescues in 1971. Today cave rescues only account for around 5-10% of our annual rescues.

However, cave rescues demand more people, more equipment and more complex logistics and the team must be prepared for all types of incident above and below ground.



49. Jun. 10th Tue. 14:03 Malham Cove

A walker (m, 72) became unwell after climbing almost to the top of the steps up the side of Malham Cove. After assessment by YAS paramedics, he was walked very gently back down with support from team members. Accompanied by the paramedics, the walker was returned to the road ambulance in a team Land Rover for further assessment.



49



50. Jun. 14th Sat. 14:38 Occupation Road above Banks Brows, Dent

A Duke of Edinburgh expeditioner (m, 17) tripped and injured his ankle. Unable to continue the walk, he wisely remained where he was and his well-prepared party set up a shelter and had some food whilst they awaited the team's arrival. Fortunately, he was on a track accessible by team vehicles, so was soon treated and then delivered to a friend's vehicle in Dent for onward transport to hospital.



51. Jun. 14th Sat. (same day). 15:45 Horton in Ribblesdale

Having just completed the annual Pen-y-ghent Fell Race, a competitor (m, 51) was taken seriously ill and collapsed on the roadside verge in Horton in Ribblesdale. As a number of team members were assisting at the event they were rapidly on scene and, assisted by a local doctor and event medics, gave immediate first aid. Fortunately, the runner soon began to recover and paramedics from both a YAS ground ambulance and YAA soon arrived. Following treatment and assessment the runner was flown to hospital for further care.



51



52. Jun. 14th Sat. (same day) 16:27 Kingsdale

With the two previous incidents drawing to a close, the team received a report suggesting that a Three Peaks walker (f) had separated from her party on Wherside in poor visibility and might have headed into the wrong valley and become lost. She eventually ended up at a farmhouse in Kingsdale, where she had been able to shelter and make calls. To offer assistance, the team members from the Dentdale incident returned via Kingsdale Head to offer transport. Before they arrived there, however, the farmer who had given her shelter had very kindly driven her round to Chapel-le-Dale to re-join her companions.



Pro Tip: Even on the most popular walks, it is easy to get disoriented in poor weather. If you are in a group, stay together and don't become separated.

If you do have to split up, ensure that each party has a map, compass, and competent navigator.



Ingleton Waterfalls Trail

TAKE A WALK IN A Waterfall Wonderland

4½ mile trail in the Yorkshire Dales with some of the most spectacular waterfall and woodland scenery in the UK.

WATERFALLS TRAIL OPEN DAILY ALL YEAR ROUND (EXCEPT CHRISTMAS DAY).

Car Park

Café Toilets Snacks & Drinks

Halfway round the trail at Falls Park

Toilets Snacks & Drinks

Tel: (015242) 41930

Ingleton Waterfalls Trail, Ingleton LA6 3ET

www.ingletonwaterfallstrail.co.uk

Scan for latest information



Falls Park
Holiday in a Waterfall Wonderland

Holiday Lodges

Motorhome Pitches

Camping

Tel: (015242) 41010
Falls Park, Oddies Lane,
Ingleton LA6 3JH

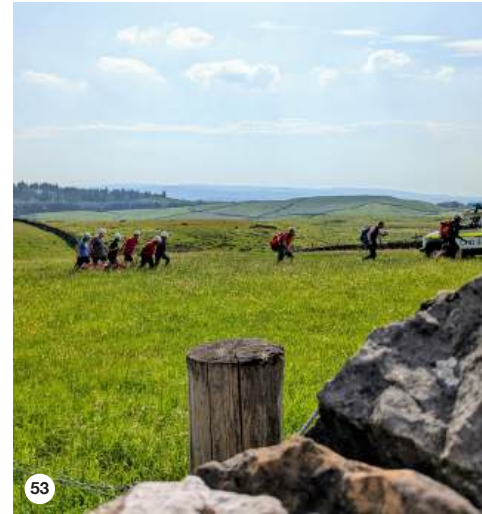
www.falls-park.co.uk

Scan for latest information



53. Jun. 20th Fri. 16:31
Saleber Force, Nr Settle

A visitor (f, 28) had fallen on the footpath downstream of the waterfall at Saleber. She was said to be suffering neck and lower limb injuries and to be having difficulty breathing. Team members assisted YAS paramedics to stabilise the casualty, then placed her into a full body vacuum mattress and onto a stretcher. Team members then hauled the casualty carefully up the steep slope and carried her to the road-head, where she was transferred to the ambulance.



53



Alert Only. Jun. 28th Sat. 15:49
Ingleton Waterfalls Trail

A visitor was reported to have fallen and been injured somewhere on the Ingleton Waterfalls Trail. Further enquiries through Trail staff determined that the injured party had returned to the car park, assisted by a passing member of the public. Nothing was required of CRO.



54. Jun. 28th Sat. (same day) 18:26
Raven Ray, Thornton in Lonsdale

A visitor (f, 24) slipped whilst at the top of the outward leg of the Ingleton Waterfalls Trail and injured her ankle, leaving her unable to continue her walk. After assessment and treatment by team members, she was lifted onto a stretcher and transported to a team Land Rover which was waiting on the track nearby. The team then drove

the casualty back to Ingleton and assisted her into the vehicle of one of her party for transport to hospital for a check-up.



54



55. Jun. 28th Sat. (same day) 21:02
Cow Pot to Top Sink, Casterton, Cumbria

A team member who was staying at the RRCPC hut at Bull Pot Farm advised that four cavers (m, 50s) were overdue from a traverse in the Ease Gill system between Cow Pot and Top Sink. Cumbria Police requested the team to carry out a search. Team cavers went to check the notified entry and exit points to the system, as well as other short-cut exit points. The missing cavers were met en route across the fell, having emerged on their own rather later than planned. They were escorted back to Bull Pot Farm, safe and well.

Donating to the Cave Rescue Organisation

The CRO receives no government funding and relies on fundraising and donations for our operations. Typically it costs around £80K per year to keep the team going. There are several ways you can make a donation to us:



A one-off or regular donation via JustGiving by scanning the QR code alongside



A regular donation by standing order, either using your banking app or sending the form opposite to your bank



A one-off donation by cheque can be sent to our Treasurer at the address below



A legacy in your will to the CRO. This can be done by making a simple amendment - please speak to your solicitor about this

JustGiving QR code



Any donation made to CRO by a UK taxpayer can be boosted by 25% when we claim back the income tax deemed to have been paid on the money given. If you make a donation by cash, cheque or standing order, please complete the Gift Aid declaration below and send it to our Treasurer, at the address shown below. For donations made via JustGiving, gift aid is applied automatically.

giftaid it

**Cave Rescue Organisation—Clapham, via Lancaster, LA2 8HH
CIO No 1201338**

Gift Aid Declaration (Please tick the appropriate box.)

I want to Gift Aid my single donation of £

I want to Gift Aid my donation of £ and any donations I have made in the past four years or make in the future.

I am a UK taxpayer and understand that if I pay less Income Tax and/or Capital Gains Tax than the amount of Gift Aid claimed on all my donations in that tax year, it is my responsibility to pay any difference.

My details (so HMRC may verify that I pay tax.)

Title: Initials Surname

Full home address

Post code: Date:

Please tell our Treasurer (treasurer@cro.org.uk) if you wish to cancel the declaration, change your name or home address or no longer pay sufficient tax on income or capital gains. Higher or additional rate taxpayers wishing to receive tax relief for donations must include Gift Aid donations on their self-assessment tax return or ask HMRC to adjust their tax code.

Set up a standing order to make a regular payment, giving your own bank and account details in the first section

CAVE RESCUE ORGANISATION - STANDING ORDER (26)

To the Manager, Bank

Address:

.....

..... Post Code:

Sort code: __ - __ - __ Account number:

Name of account to be debited:

Please pay / monthly* / annually* the sum of £

[amount in words:] to Cave Rescue

Organisation, commencing on the day of (month) (year) until further notice.

(*delete as appropriate)

Signed: Date:

Bank: CAF Bank Ltd, 25 Kings Hill Avenue, Kings Hill, West Malling, Kent ME19 4JQ

Sort code: 40-52-40, Account no: 00036831 a/c name: Cave Rescue Organisation

Please quote reference:

This authority cancels any previous authority in favour of this payee. Please acknowledge receipt of this authority.

When completed, please send this form to your own bank.

Please complete the Gift Aid Declaration (opposite) and send it to:

The Treasurer, Cave Rescue Organisation, Clapham via Lancaster, LA2 8HH



**56. Jun. 28th Sat. (same day) 21:02
Ingleborough**

Two seconds after receiving the call on Incident 55, NYP called the team to request assistance for an injured walker (f) heading towards Horton. A walker had seen her party moving slowly while trying to get back to their vehicles in Horton, and had been asked to call for Mountain Rescue once back into mobile signal. Unfortunately, the reporting person did not get any contact details for the injured party so the team had no way of contacting them. Team members searched all possible routes off from the last known position of the injured person, but no-one was found. After discussion with NYP the team stood down on the basis that the party must have reached their vehicle and left.



Pro Tip: If you do come across someone who you think might need mountain rescue assistance when out in the hills, or who asks you to call for assistance, please get some contact details for the injured party if you are not staying with them. The team can then make contact directly with them, if only to confirm they have got down under their own steam and are home safe.



56



**57. Jun. 28th Sat. (same day) 22:50
Long Churn and Alum Pot, Selside,
Horton in Ribblesdale**

As the vehicles returned to the CRO Depot from Incident 55, and with Incident 56 ongoing, the team received a fourth call of the evening for a party of three cavers (f, 39; f, 29; m, 26) overdue on a trip through Long Churn down to the window in Alum Pot. A team Land Rover re-deployed from the Ingleborough search and team members confirmed that the overdue cavers' car was in Alum Pot Lane. They continued on foot to check the cave entrance, and determined that the water levels in the stream flowing through the cave were extremely high due to heavy rainfall. After an initial assessment, it was decided that conditions were too unsafe to enter the Long Churn system directly, so a small team went to Alum Pot to abseil down and look across for signs of light and attempt to make contact by voice or whistle if the party were sheltering in the Balcony or St Pauls area. Finding nothing, team members checked the other entrances whilst waiting for the water to subside. Once water levels dropped sufficiently to safely enter the system, team members on scene began a search and the rest of the team's cavers headed up to the cave to provide assistance. The missing cavers were relatively quickly found safe and well – if a little cold – sheltering in a safe place in Lower Long Churn. Team members assisted the party back to the surface and, after a quick assessment by a team nurse, they were walked back off the fell to a team Land Rover for transport back to their vehicle.



Pro Tip: Long Churn responds quickly to heavy rainfall, especially when the ground is already saturated, making some areas of the cave impassable. Always get a forecast and observe the local conditions before going underground.



57



**58. Jun. 29th Sun. 13:00
Gaping Gill Area, Clapham**

A walker (m, 75) fell and hit his head on rocks in the vicinity of Gaping Gill. The first team members set off in CRO 4, followed closely by more members in team Land Rovers. As the first team members arrived on scene they found that YAA was already there and the crew had managed to get the casualty the short distance to the helicopter. Once YAA confirmed that they would transport the casualty directly to hospital, the team headed back down the hill to the Depot.

JULY



**59. Jul. 3rd Thu. 00:14
Hornby, Lancashire**

Bowland Pennine MRT (BPMRT) asked for assistance with an ongoing search for a missing person (f, 68) in the Hornby area. CRO swiftwater rescue technicians were tasked with searching the River Wenning downstream of Hornby Bridge to the River Lune. Just as the search of the river was completed, the missing person was located safe and well by a BPMRT ground search party and CRO members were stood down.



**60. Jul. 12th Sat. 15:22
Wherside**

A Three Peaks walker (m, 63) suffered from exhaustion on the descent from Wherside. Team members found him on the summit ridge, considerably higher up the fell than the initial information had suggested. He was assessed and given fluids and high-energy food, after which his condition improved. He attempted to walk off with assistance from team members but was moving slowly and was transferred to a Bell stretcher (a heavy-duty stretcher with runners) for sledging down the steep face of the fell. On arrival at the team vehicles near Bruntscar, he was handed over to YAS paramedics for further assessment and any necessary care.



Self-catering accommodation for 20 in a stunning location
Individuals, couples and small groups welcome mid-week



Spacious upstairs open-plan lounge, kitchen & dining area is also perfect for workshops. Full details on website.



Day time hire for events, meetings, workshops, art groups
Broadrake Chapel-le-Dale Ingleton North Yorks. LA6 3AX
www.broadrake.co.uk 015242 41357 info@broadrake.co.uk



59



61. Jul. 13th Sun. 15:33
Nr Snow Falls, Ingleton

A walker (f, 35) slipped and injured her ankle on the path below Snow Falls on the return leg of the Ingleton Waterfalls Trail. Team members assessed the casualty, administered pain relief, and splinted the ankle. They then stretchered the casualty to a team Land Rover which took her and her party back to their own vehicle for onward transport to hospital.



A THRILLING TRAIL AND CAVE ADVENTURE
for all the family to enjoy

The Old Sawmill

CAVE: the heritage & history of this listed building has been beautifully preserved, providing a fascinating backdrop for visitors to immerse themselves in whilst enjoying use of the cave.

CAVE: an exhilarating underground adventure exploring 500 metres of ancient passages, in the heart of the Yorkshire Dales, deep beneath Ingleborough.

TRAIL: gateway to the UK's finest walking country, including Trow Gill Gorge, Gaping Gill and Ingleborough summit.

TEL: 01524 251242 **SOCIAL:** www.facebook.com/ingleboroughcave www.instagram.com/ingleboroughcave www.tiktok.com/@ingleboroughcave
www.ingleboroughcave.co.uk
www.ingleboroughtatenaturetrail.co.uk
www.oldsawmillcafe.co.uk



62. Jul. 24th Thu. 23:35
Ingleborough Summit

Three walkers (all f, 67, 68, 70) became disorientated in poor visibility and darkness on the summit of Ingleborough. The walkers, who had fading torchlight and limited phone charge, wisely decided to call for help and stay where they were. PhoneFind allowed the Duty Controller to pinpoint their location, and a small party was sent to find them. Team members met the group on the summit, and, after checks, escorted them back to a team Land Rover for transport down from the hill.



Pro Tip: PhoneFind is a system rescue teams can use to find your location accurately if you are lost. If we have your mobile number, we can send you a text including a link that you can click. Provided your phone has access to data services this will give us your precise location.



63. Jul. 26th Sat. 16:35
Malham Cove

A walker (m, 61) was reported to have fallen and injured himself near Malham Cove. Neither YAS nor the CRO controller could re-establish contact directly, so team members began a search of the Cove area. Several passers-by thought they might have witnessed an incident, but the injured party appeared to have 'self rescued' and left the scene. Other local enquiries were made in the village without result. Eventually, the injured party was contacted and confirmed that, having cancelled his emergency call – a cancellation not received by CRO – he was safely on his way to hospital for treatment in his own vehicle.



Pro Tip: If you have to call 999 for any of the emergency services and then manage to resolve the situation yourself, please call back and let the emergency service know they are no longer needed.

AUGUST



Alert Only. Aug. 2nd Sat. 18:41
Outcrop Below New Close Knotts, Gordale Scar, Malham

A 'lamb' was reported to be cragfast and in distress on one of the limestone scars to the SW of Gordale Scar. The Duty Controller asked a colleague to assess the site, then alerted team members for attendance the following morning. In the meantime, a neighbouring farmer sent up his sheepdog and the well-grown 'lamb' self-rescued.



Alert Only. Aug. 3rd Sun. 10:08
Rift Pot (Masongill), Thornton in Lonsdale

A caver reported that a sheep was stranded about 20m down a shaft into Rift Pot (Masongill). He offered to attempt to rescue it and report back. Meanwhile, team members were put on stand-by. When the caver advised that the sheep had been returned safely to the fell, team members were stood down.



64. Aug. 4th. Mon. 15:33
River Greta from Ingleton to Burton in Lonsdale and continued the next day from Ingleton to Greta Bridge (Tunstall, Lancashire)

NYP received a report of a body floating down the River Greta at Ingleton Bottoms. NYP and North Yorkshire Fire & Rescue Service (NYFRS) responded, then called CRO to join the search. A combined effort between CRO's swift-water rescue technicians and bank-safe searchers plus NYFRS swift-water rescue technicians from Skipton, Richmond and Selby searched from Ingleton Bottoms to the A65, then down to Burton in Lonsdale, without result. The following day, NYP's divers and CRO members searched in the water and from the banks again from the A65 down to Burton. Smaller groups and a police kayaker then searched down to Greta Bridge (1 km before the Lune confluence). Again, nothing was found. No cars had been left in the Ingleton Waterfalls Trail car park overnight and no-one was reported missing, so the incident was closed by NYP.



DALES LODGE

Tel: 01524 805724
 daleslodge@gmail.com
 f @



Brand new, purpose-built, high quality flexible self-catering accommodation for up to 28 people, ideally located in Ingleton at the foot of the famous Yorkshire Three Peaks.

Not your average 'bunk barn' - more ski-chalet/hostel - a 'must' stay!



Spacious open-plan living area. Well-equipped kitchen and 12-seat dining area. Comfortable lounge and en suite bedrooms. Drying room for boots and walking gear.

Fabulous for families and small groups who enjoy the great outdoors.



www.daleslodge.co.uk | Kirksteads Paddock, Tatterhorn Lane, Ingleton LA6 3DU



65. Aug. 6th, Wed. 11:57 Swine Tail, Ingleborough

A walker (m, 51) slipped at the beginning of the ascent of the Swine Tail, sustaining a suspected ankle fracture. CRO 4 was driven up onto Little Ingleborough carrying three team members as a 'hasty party'. They continued on foot to the casualty site above the hand-gate leading to Humphrey Bottom, meeting the YAA crew who had already arrived and begun assessing and treating the casualty. Team Land Rovers carried other members to Nick Pot in case a stretcher evacuation was required. The hasty party assisted the YAA crew in carrying the walker by stretcher about 150 m to the helicopter which then flew the casualty to hospital.



66. Aug. 8th, Fri. 11:34 Kirkby Fell, Nr Malham

NYP received a report of a walker (m) who was found having a medical episode by a passing cyclist on the path across Kirkby Fell. Team members were able to drive team Land Rovers along a track to within a few hundred metres of the casualty and, after an assessment by the YAA doctor, stretchered the casualty to a team vehicle for transport back across the fell to a waiting YAS land ambulance.

66



Alert Only. Aug. 9th Sat 15:49 Gaping Gill, Clapham

NYP forwarded a report of a caver overdue in the Gaping Gill system. As the Duty Controller was making initial enquiries, the reporting person advised that the caver was now safely back on the surface.



67. Aug. 14th Thu. 15:44 Coniston Hall Hotel, Coniston Cold

NYP asked for assistance with a search for a missing hotel guest (m, 87) who had not been seen for over 24 hours. Members were tasked with searching the wooded areas of the Hotel and Hall grounds where the police helicopter and drones had been unable to see beneath the canopy. Five search teams were deployed including the team search dog, Kez and handler. The missing man was eventually found after an extensive search in and beyond the woodlands. Despite having fallen and having spent the night outside unable to get up, he was in good spirits and following an assessment by team medics was brought back to the Hotel for further checks by YAS. Team members were very grateful for the refreshments provided by the hotel after the incident.

67



THRILLING OUTDOOR ACTIVITIES FOR EVERYONE



GET IN TOUCH



saaigoutdoors

- ROCK CLIMBING
- 3 PEAKS
- GUIDED WALKS
- ORIENTEERING
- WINTER SKILLS
- NAVIGATION
- ABSEILING
- ARCHERY
- CAVING
- TRAIL RUNNING
- INDOOR CLIMBING
- PLUS LOTS MORE

FAMILIES, GROUPS & 1-2-1 COACHING

Let the adventure begin
 at saaigoutdoors.com



68. Aug. 16th Sat. 09:00
Fluted Holes, Newby Moss,
Clapham cum Newby

A sheep was seen on a ledge down Fluted Holes on Newby Moss. A small team drove up in team vehicles, and a team member abseiled into the shaft and encouraged the sheep into the animal haul sack. The sheep was then carefully brought to the surface and released, a little hungry but otherwise unharmed.



68



69. Aug. 16th Sat. (same day) 18:30
Simon Fell Breast, Ingleborough

A Three Peaks walker (m, 27) sustained a left ankle injury whilst descending Ingleborough and was unable to continue. A small team drove close to the casualty in CRO 4, backed up by others who walked in carrying additional equipment. After team members had assessed and splinted the injured ankle, the casualty was brought off the fell in CRO 4 and transferred to a YAS ambulance waiting at the CRO Depot in Clapham.



70. Aug. 23rd Sat. 14:45
Whernside Summit

A distressed walker with medical problems was encountered by other walkers as they reached the summit of Whernside. With the assistance of several walkers the casualty reached the top of the steep descent path, where team members met her. The team members then assisted her in a slow, safe walk down to a team Land Rover which returned her to her weekend accommodation.



71. Aug. 24th Sun. 16:33
Ingleborough Summit

Undeterred by her experience on Whernside the previous day and underestimating the challenge, particularly of the descent, the walker from Incident 70 reached the summit of Ingleborough but felt unable to begin the rocky descent. A passer-by called for help, and a small team drove in a team Land Rover to Crina Bottom. The team members continued on foot and met the walker with three other walkers who had selflessly supported her down the first and worst part of the descent. The team members assisted her the rest of the way down to the team vehicle at Crina Bottom.



Alert Only. Aug. 25th Mon. 14:20
Steps to top of Malham Cove

A visitor (f, 46) fell near the top of the steps up the side of Malham Cove, sustaining a head injury. YAS requested assistance in moving the patient from the accident site to the YAA helicopter. As the helicopter was already on scene before CRO was asked to assist, the crew stood the team down rather than delay the evacuation.



69



72. Aug. 25th Mon. (same day) 18:16
Top of the Swine Tail, Ingleborough

A Three Peaks walker (f, 55) experienced pain in one knee on the descent from Whernside. This had worsened by the time she reached Ingleborough, so she was unable to put any weight on it as she left the summit plateau. In the very dry conditions, team members were able to take vehicles quite a way up Little Ingleborough. Team members then continued on foot over the summit plateau to the casualty's location. After assessment by the team doctor, the leg was splinted and the casualty carried and wheeled down to a waiting team Land Rover which took her to Clapham for transfer to the family car.



Alert Only. Aug. 26th Tue. 12:57
Path Nr Beezley Falls, Ingleton

A visitor (f, 37) slipped on the return leg of the Ingleton Waterfalls Trail near Beezley Falls, sustaining a serious ankle injury. The team was put on stand-by, but when the Duty Controller telephoned the reporting person, he was told that several other visitors were helping the injured person back to the Falls Park Cafe. As this would be accessible to a YAS vehicle, the Duty Controller advised NYP that the team was standing down.



Alert Only. Aug. 27th Wed. 13:03
Whernside

A report was received, describing one or possibly two green lights flashing on Whernside and expressing concern that someone might be in distress. After a check showed no aircraft in the immediate Three Peaks area, a team member agreed to drive to Ribbleshead and view the hill through binoculars. This allowed him to see two digging machines carrying out works on a footpath for the Yorkshire Dales National Park Authority. The Duty Controller advised NYP and recorded the matter as 'a false alarm with good intent', requiring no further action from CRO.



72



73. Aug. 28th Thu. 12:15
Barbon Beck, Barbon, Cumbria

Team members assisted Kendal Mountain Search and Rescue Team (KMSRT) with a Cumbria Police request for a search for a missing person near the boundary between our respective operational areas. Following a period of bankside and woodland searching the team was stood down when the missing person was located outside the team's search area, sadly deceased.

FATAL

SEPTEMBER



74. Sep. 6th Sat. 12:44
Whernside Summit

A walker (f, 52) was unable to continue along Whernside summit after aggravating a hip injury. Team members approached from the 'rear' (Kingsdale) side (as opposed to the 'front', facing Ingleborough) as this can allow more rapid access, particularly if CRO 4 is used to transport equipment. After assessment by the team doctor, the casualty was packaged and then sledged and carried down to a team Land Rover waiting in Kingsdale. She and her companions were returned to their own vehicles at Ribbleshead, ready for the journey home.

CASTLEBERG OUTDOORS

gear for adventure

An independent family-run shop for hiking and running, proudly based in the heart of the Yorkshire Dales.



shop instore or online today ↪

www.castlebergoutdoors.co.uk

Settle
North Yorkshire

01729 823751



Alert Only. Sep. 11th Thu. 12:30
Kirkby Fell, Nr Malham

NYP requested assistance for a farmer who had a cow stuck in marshy ground on Kirkby Fell. As the Duty Controller was gathering more information, the farmer called back to say that she had succeeded in freeing the animal and no action was required from CRO.



75. Sep. 11th Thu. (same day) 14:16
Path Nr Baxengill Gorge, Ingleton

A walker (f, 38) slipped on the path near Baxengill Gorge on the return leg of the Ingleton Waterfalls Trail, sustaining an injury to her ankle and lower leg. Upon arrival, the team found that the YAS paramedics had already treated the casualty and required assistance only with a short stretcher carry back to the waiting ambulance.



76. Sep. 13th Sat. 18:35
Ingleborough

A walker (f, 47) became separated from her party whilst descending from the summit of Ingleborough. Although initially uncontactable, the missing walker came back into mobile signal as the Duty Controller was making initial enquiries. Upon speaking to the missing person the Duty Controller was able to ascertain that she had taken the path back to Chapel-le-Dale by mistake and was now only about 100m from the road. Team members drove round to check she was safely off the hill and take her back to Horton to meet the rest of her party.



77. Sep. 17th Wed. 09:30.
Ingleborough

Two walkers (f, 25; f, 27) who were struggling due to the strong winds on the top of Ingleborough called for help. Upon speaking to them, the Duty Controller agreed that the best course of action was to have them slowly retrace their steps whilst he tracked their location. As they started to make their own way out of the worst of the wind, three team members set off to meet them near Nick Pot in a team Land Rover. On arrival at Nick Pot the team found the walkers waiting for them safe and well. The walkers were taken back to their vehicle in Horton.



78. Sep. 19th Fri. 18:57
Top of Malham Cove

In heavy rain, a Duke of Edinburgh expeditioner (f, 15) slipped on the seriously slippery limestone pavement at the top of Malham Cove, twisting a knee and dislocating the kneecap. After assessment and pain relief a team paramedic reduced the dislocation, thus easing the pain further. Team members then helped the casualty into an insulated 'cas bag' and onto a stretcher. Team members then carried the casualty across the limestone pavement and down the hill to where a team Land Rover was waiting to take the casualty to a YAS road ambulance.

The Station Inn



Serving local hand pulled ales and an extensive menu of quality home-made food sourced from local produce.

6 en suite letting bedrooms and bunk houses for up to 20 people.

Providing a warm welcome and proud to support the essential work of the Cave Rescue Organisation.



Ribblehead Viaduct LA6 3AS 015242 41274
thestationinnribblehead.com



**79. Sep. 20th Sat. 13:38
Whernside**

A Three Peaks walker (m, 31) with a pre-existing medical condition had a series of dizzy spells before apparently fainting then going in and out of consciousness. The location was described as ‘three quarters of the way up Whernside’, although the initial grid reference suggested Gayle Moor, near Newby Head. Once the casualty was confirmed to be on the Whernside summit ridge, team members proceeded up to his location. On arrival, they assessed the casualty, then placed him in an insulated ‘cas bag’ and onto a Bell stretcher. They then carried the casualty over the summit ridge and sledged him down to the head of Kingsdale to be handed over to the care of the YAS ambulance crew. This route gives a shorter, simpler descent than that down the Chapel-le-Dale side of the hill, and has the added advantage of avoiding the large number of walkers doing the Three Peaks walk.



**80. Sep. 20th Sat. (same day) 18:17
Pen-y-ghent**

A Three Peaks walker (f, 41) collapsed near ‘the fingerpost’ at the corner leading on to ‘the miners’ track’ to the summit of Pen-y-ghent. Team members, most of whom had just returned from the previous incident, were taken to the top of Horton Scar Lane in team Land Rovers, then walked the rest of the way up the hill. Team members were sufficiently concerned at the condition of the casualty that a Coastguard helicopter was requested and authorised by NYP, but conditions were too bad for the helicopter even to take off from its base. Team members accordingly used a Bell stretcher to sledge and carry the casualty down to a team Land Rover, which drove the casualty to a YAS land ambulance waiting in Horton in Ribblesdale.

summit of Whernside at about 13:00. Neither walkers’ mobile phone was answered, nor was there any response to PhoneFind messages. Soon, however, the team received a call from the original reporting person to advise that the two missing walkers had now arrived safely in Horton.



**Alert Only. Sep. 20th Sat. (same day)
20:26
Ingleborough**

While incident number 80 was still in progress, NYP forwarded a report that two Three Peaks walkers had not returned to Horton in Ribblesdale, having last been heard from on the



**81. Sep. 24th Wed. 17:36
Malham**

NYP requested CRO’s support with an incident at Malham. A small team attended to assess the situation, and additional members were available at the Depot to deploy if needed. The situation was successfully resolved, eventually, without CRO’s direct involvement.



**82. Sep. 25th Thu. 02:33
High Bentham**

NYP requested CRO’s support for a local search for a missing person (m, 82). As the team were assembling at the RV point, the Police helicopter located the missing person safe and well and the team was stood down.



**Alert Only. Sep. 25th Thu. (same day)
20:36
Ingleborough**

A group of Three Peaks walkers expressed concern for the welfare of one of their number on the descent from Ingleborough in darkness. The Duty Controller was able to speak with the group and confirmed their location. He was also able to give assurances that they were close to the finish and on the correct path. The group soon completed the walk safely.



**83. Sep. 29th Mon. 06:56
Ingleton**

NYP requested the assistance of CRO to search for a missing person in the Ingleton area. Team members conducted a wide-ranging search beginning near Beezleys and through part of Storrs Common. After a reported sighting near Back Gate, the missing person was found near Low Demesne.

OCTOBER



**Alert Only. Oct. 1st Wed. 14:46
Ingleborough Nature Trail, Clapham**

A visitor (m, 80’s) collapsed on the Nature Trail. As the team were preparing to respond they received a further call to say that the visitor had been brought down to Clapham by estate staff and that no further assistance was required.



**84. Oct. 2nd Thu. 17:23
Whernside**

A walker (m, 17) slipped and injured his ankle and knee descending from Whernside toward Bruntscar. Team members ascended to the casualty’s location just off the summit ridge, where they assessed him and placed him in an insulated ‘cas bag’. They then sledged the casualty down to the roadhead on a Bell stretcher and handed him over to YAS paramedics for further care. A straightforward incident, unlike the one that followed later that evening ...



**85. Oct. 2nd Thu. (same day) 22:02
Providence Pot, Kettlewell**

UWFRA asked the team to assist with investigating a report of three cavers overdue in Dowbergill Passage, a demanding through trip between Providence Pot and Dow Cave in Upper Wharfedale. An all-night search by cavers from the two teams and Swaledale MRT (SMRT) eventually located the missing cavers around 09:15 on Friday morning well into the system, tired but uninjured. Deteriorating weather conditions from Storm Amy meant that the Dow Cave exit was impassable due to water levels, so the missing cavers had to be taken back out via Providence Pot. Cavers from the three teams and CRO's Cavers List (a group of experienced cavers trained to assist with major underground rescues), as well as members from Calder Valley Search and Rescue Team (CVSRT) and Derbyshire Cave Rescue Organisation (DCRO) helped the increasingly tired cavers back through the cave.

Throughout the incident, members from UWFRA, CRO, the Cavers List, SMRT, DCRO, and RAF Leeming MRT, as well as Hag Dyke Hostel staff, assisted on the surface in increasingly difficult weather conditions with control, communications, logistics, and transport, as well as damming Dowber Gill Beck to prevent the Providence Pot entrance flooding.

The first missing caver surfaced at 15:28 on Friday afternoon, the second at 02:27 on Saturday morning, and the third at 04:31 on Saturday morning. In total, around 120 members of various rescue teams worked together on an arduous but ultimately successful rescue. CRO and the Cavers List contributed around 1,000 hours out of approximately 3,600 hours of total volunteer time on the rescue: to put this into context, a typical surface rescue might involve 20 to 50 hours.



**86. Oct. 11th Sat. 15:39
Nr Janet's Foss, Malham**

A walker (f, 24) slipped and injured her ankle not far from Janet's Foss on the path towards Malham village. After she had been assessed by a YAS paramedic, team members helped her to



85

the YAS road ambulance which took her to Settle Railway Station for the first train home.



**87. Oct. 25th Sat. 16:18
Ingleborough**

YAS asked the team to assist with a walker (f, 61) who had taken a tumbling fall coming off the summit of Ingleborough and sustained arm and facial injuries. As team members headed up toward the casualty's location from the Hill Inn, YAA attended and airlifted the casualty to a YAS land ambulance for onward transportation to hospital.



87



**88. Oct. 31st Fri. 12:01
Crina Bottom, Ingleborough**

A walker (f, 23) took a fall on the descent from Ingleborough towards Ingleton, sustaining a painful ankle injury which rendered her unable to continue unaided. As team members were proceeding to the casualty site, other passing walkers helped the injured walker down to nearby Crina Bottom Farm where the owner very kindly offered assistance whilst waiting CRO's arrival. The walker was assessed, treated, and given pain relief prior to being driven back to CRO Depot in a team Land Rover. On arrival there she was met by YAS paramedics and taken to hospital for further treatment.

NOVEMBER



**89. Nov 1st Sat. 13.47.
Foxup Moor, Halton Gill**

A walker (m, 49), having walked over Pen-y-ghent, slipped and fell on the Foxup Road and suspected he had broken his lower leg. Our colleagues at UWFRA mobilised as the callout was in their operational area, while also requesting CRO's assistance. YAS personnel and UWFRA and CRO members worked together to treat the casualty and stretcher him to an ambulance waiting at Foxup.



**90. Nov. 6th Thu. 17.55
Ingleton Waterfalls Trail, Nr Storrs Common, Ingleton**

A lone walker (f, 24) reported herself lost and benighted near the end of the Trail. The Duty Controller quickly established her location, and two team members in a team Land Rover drove to the location and returned her to the Trail car park.



Eye-Bex
Sports Therapy
Keeping active people active!

**Sports & Remedial
Massage for all**

✉ becca@eye-bex.com
☎ 07775 691131
www.eye-bex.com

The iCentre Ingleton LA6 3BT



89

INGLESPORT

SHOP - CAFE - CLIMBING WALL - ONLINE STORE

FENIX PETZL BMM Rab Beal

11 THE SQUARE, INGLETON - (015242) 41146 - INGLESPOINT.COM



91. Nov. 8th Sat. 14.12.
Alum Pot, Selside, Horton in Ribblesdale

A group of cavers abseiled to the bottom of the 90m shaft of Alum Pot but did not risk the ascent as their rope showed signs of damage. The Duty Controller alerted the team but also advised the reporting person to see whether other cavers could help. As the team assembled at the RV point, they received a further call confirming that the group called to say that they had returned safely to the surface using another group's rope.



92. Nov. 12th Wed. 05.06.
Malham Cove, Malham

NYP requested CRO's assistance with a search for a person missing in the Malham Cove area. However, as the team were en route, officers found the person, sadly deceased. Team members searched the Cove edge and ledge for personal effects and transported the deceased to the road head. **FATAL**



93. Nov. 16th Sun. 15.03.
Little Ingleborough, Clapham

A walker (m, 60) fell while descending from Ingleborough towards Clapham, injuring his knee. A small party of team members set off towards Trow Gill in a team Land Rover, meeting the casualty part-way as he had attempted to continue down before being given a lift in an Ingleborough Estate vehicle. Once back at the CRO Depot, team Remote Rescue Medical Technicians examined and dressed his injury. His spouse was then able to drive him to hospital.



94. Nov. 30th Sun. 11.32.
Pen-y-ghent

A group of walkers, ascending between the last two steep sections of Pen-y-ghent, reported to YAS that they had found a person by the path, cold and showing no signs of life. A 'hasty party' of team members attended the site and confirmed that the person was deceased. Additional team members with further equipment, a YAS paramedic, and a police officer attended and recovered the deceased to an ambulance waiting at Churn Milk Hole. **FATAL**



DECEMBER



95. Dec. 13th Sat. 22.25.
Bar Pot, Nr Gaping Gill, Clapham

A caver (m, 43) was struggling to exit the Gaping Gill system via Bar Pot. A 'hasty party' of three cavers set off in CRO 4 to assess situation and take some warming kit for the rest of the party who were on the surface, whilst a team Land Rover followed up with more equipment and personnel. On arrival at the cave entrance the team found that the stuck caver was in good spirits and had been able to make his own way back down the pitch. With more team cavers on standby at the CRO Depot in case the rescue became more complicated, the party up at Bar Pot rigged an alternative entrance to the system, Small Mammal Pot. They entered the cave, located the previously stuck caver, and led him back to the surface.



96. Dec. 26th Fri. 12.54.
Ribble Way Path, Nr Borrins, Giggleswick

A walker (m,61) experienced a medical episode on the riverside path between Stackhouse and Little Stainforth. After YAS paramedics who were first on scene had assessed the casualty and provided initial care, team members stretched the casualty to the road ambulance on Stainforth Lane.

Equipment

We need a lot of equipment to carry out our rescue services - just a selection of our inventory is illustrated below. All this kit needs purchasing, maintaining and replacing on a regular basis.

3 Land Rovers



6 stretchers



2 kilometres rope



75 radios



72 harnesses



230 slings



480 Karabiners



61 pulleys



20 drysuits



4 defibrillators



1 All Terrain Vehicle



Mountain Rescue Search Dogs (England)



In England and Wales, anyone wishing to begin to train, qualify and run a search dog, must first be an operational member of a recognised search and rescue team. Training and assessment are very thorough and cannot even begin until the young dog has demonstrated, unequivocally, that it takes no notice of sheep. In 2025 the CRO had one member who worked with his search dog, training every week over a mix of terrain, thanks to the agreement of several local farmers and the support (by getting 'lost!') of a number of dogs' bodies.

Kez (below) and her handler were called out ten times outside the CRO core area in 2025. These incidents are detailed on the next page.

For more information on mountain rescue search dogs visit: mountainrescuerearchdogsendland.org.uk



KEY:**BPMRT** - Bowland Pennine MRT**KMRT** - Keswick MRT**PAMRT** - Patterdale MRT**SWMRT** - Swaledale MRT**TWMRT** - Teesdale and Weardale MRT**UWFRA** - Upper Wharfedale MRT**06. Jun. 13th Fri. 05:47.**
SWMRT – Reeth, North Yorkshire

Called to search Skelgate area of Reeth for man (56) who left his accommodation during the night. Found, unharmed, by a member of the public in a nearby telephone call-box.

**07. Aug. 27th Wed. 10:00.**
KMSRT – Barbon, Cumbria

Called to search river gorge for youth (m, 15), missing from home. Found, deceased, later in the day, in a farm building, by Police dog and handler. CRO team also involved in search (incident no 73). **FATAL**

**08. Sep. 18th Thu. 13:50.**
UWFRA – Lothersdale, North Yorkshire

Called to search for vulnerable child (m, 14) missing from home. Stood down on arrival when the missing person was found, unharmed, in woodland by Police dog and handler.

**09. Oct. 23rd Thu. 20:00.**
BPMRT – Gisburn Forest, Lancashire

Search margins of Stocks Reservoir after a local search dog had indicated something, the evening before, in a search for a man (31) reported missing from home. Found, deceased, in the forest by a local team member, a day later. **FATAL**

**10. Dec. 5th Fri. 16:45.**
UWFRA – Gargrave, North Yorkshire

Search Dog Kez was called to try to indicate a direction of travel for a man (52) who seemed to be missing from work, seven hours after last being seen. The scent washed out but the direction was clear enough. He turned up, unharmed, in a supermarket car park, in Colne, having walked along the canal bank.

**01. Jan. 14th Tue. 01:34.**
UWFRA – Ripon, North Yorkshire

Called to search for high-risk child (m, 14) missing since the previous day. Stood down en route when the child was found, unharmed, by NYP

**02. Mar. 21st Fri. 18:30.**
TWMRT – Hamsterley Forest, Durham

Called on day 4 of a search for a runner (f, 23) near Hamsterley Forest. Found, deceased, by NPAS helicopter on day 5. **FATAL**

**03. Apr. 5th Sat. 18:30.**
TWMRT – Hamsterley Forest, Durham

Called 13 days after bird-watcher (m, 80) went missing near Belmont. Found, deceased, outside search area, some time later. **FATAL**

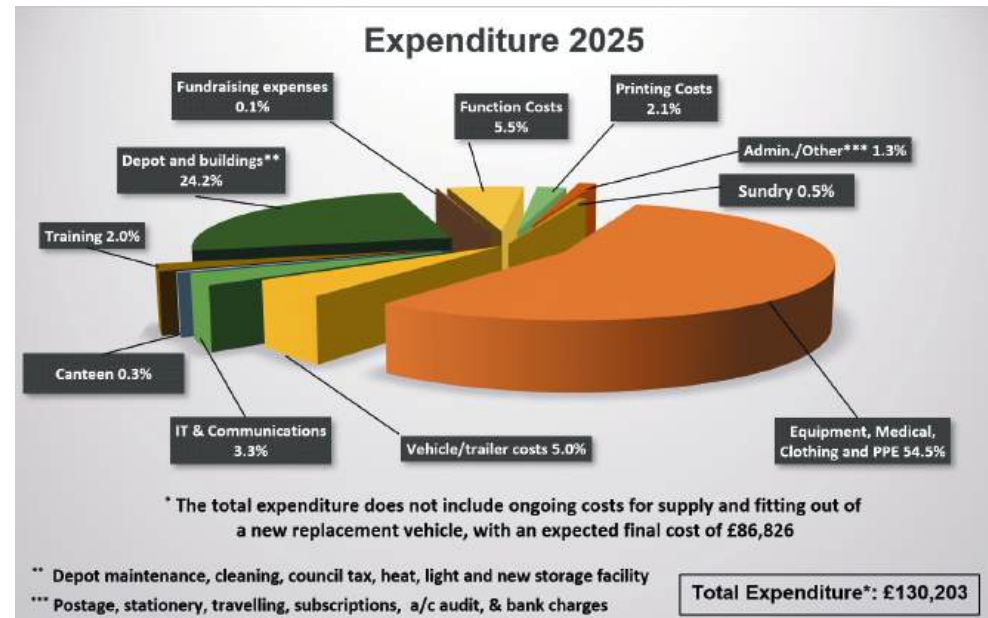
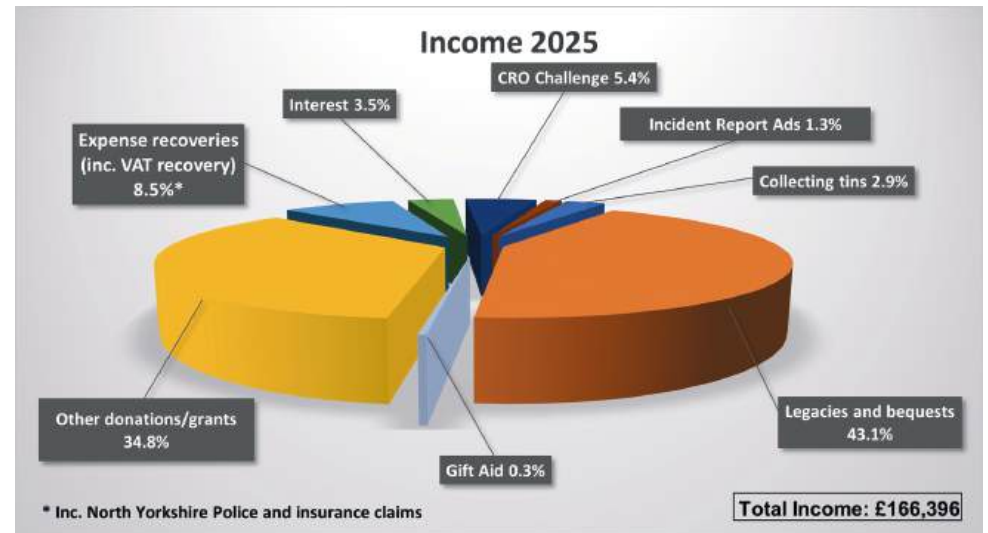
**04. Apr. 11th Fri. 11:48.**
KMRT – Whinlatter Forest, Keswick, Cumbria

Called to search Hobcarton Plantation where a high-risk missing person (f, 58) had disappeared. Found, alive, by Kez, but in need of medical attention.

**05. Apr. 13th Sun. 08:00.**
PAMRT – Hartsop, Cumbria

Called to search woodland near Hartsop hamlet for high-risk missing person (m, 34). Found, deceased by member of the public, near Garburn Pass, some distance from search area. **FATAL**

CRO Financial Summary 2025

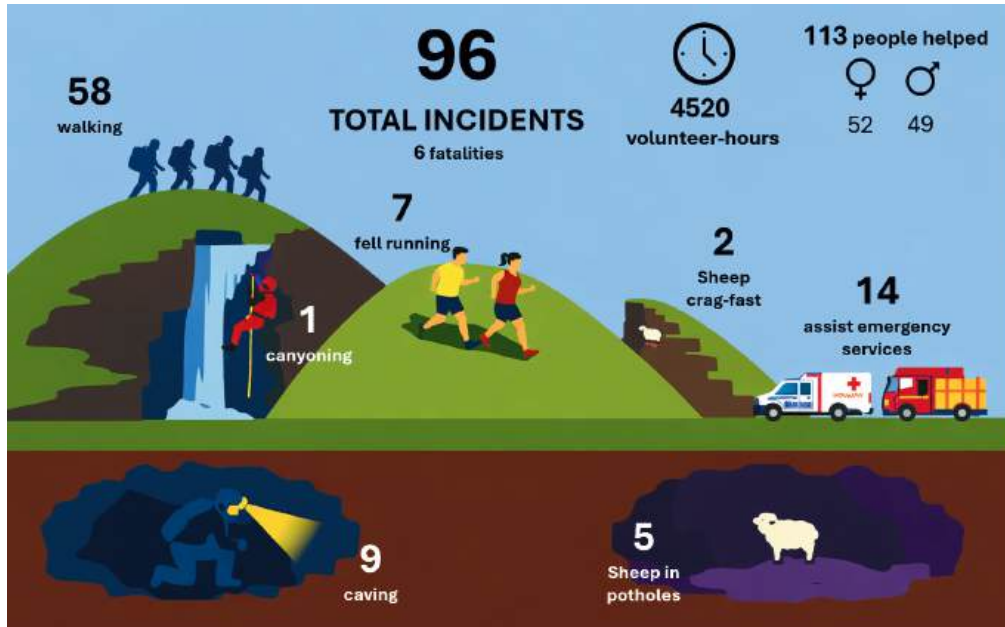


This is a summary of the CRO's income and expenditure for the year ending October 31st 2025. The income figures exclude funds that were transferred from the old charity (no. 241091) to the new Charitable Incorporated Organisation (no. 1201338).

Our income was significantly larger than in recent years owing to some very generous legacies and donations. Our expenditure was also higher than usual through significant costs of replacing medical equipment, team PPE and depot maintenance.

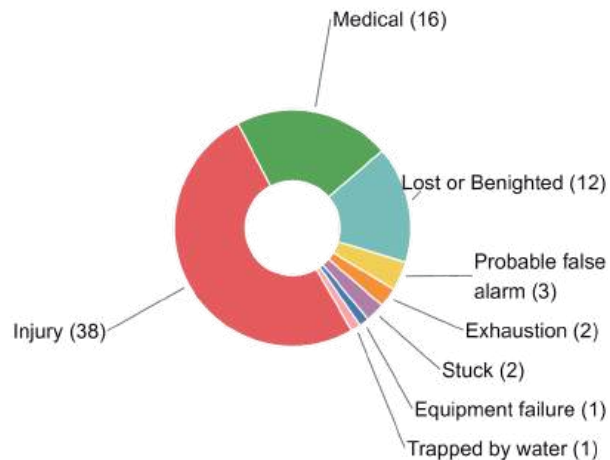
The Organisation's annual report and accounts may be read, in full, on the Charity Commission website at www.gov.uk/government/organisations/charity-commission. Click on 'Find a charity', then type either 'Cave Rescue Organisation' or 1201338.

2025 call-outs in numbers



2025 incident causes

(Omits animals and emergency service assists)



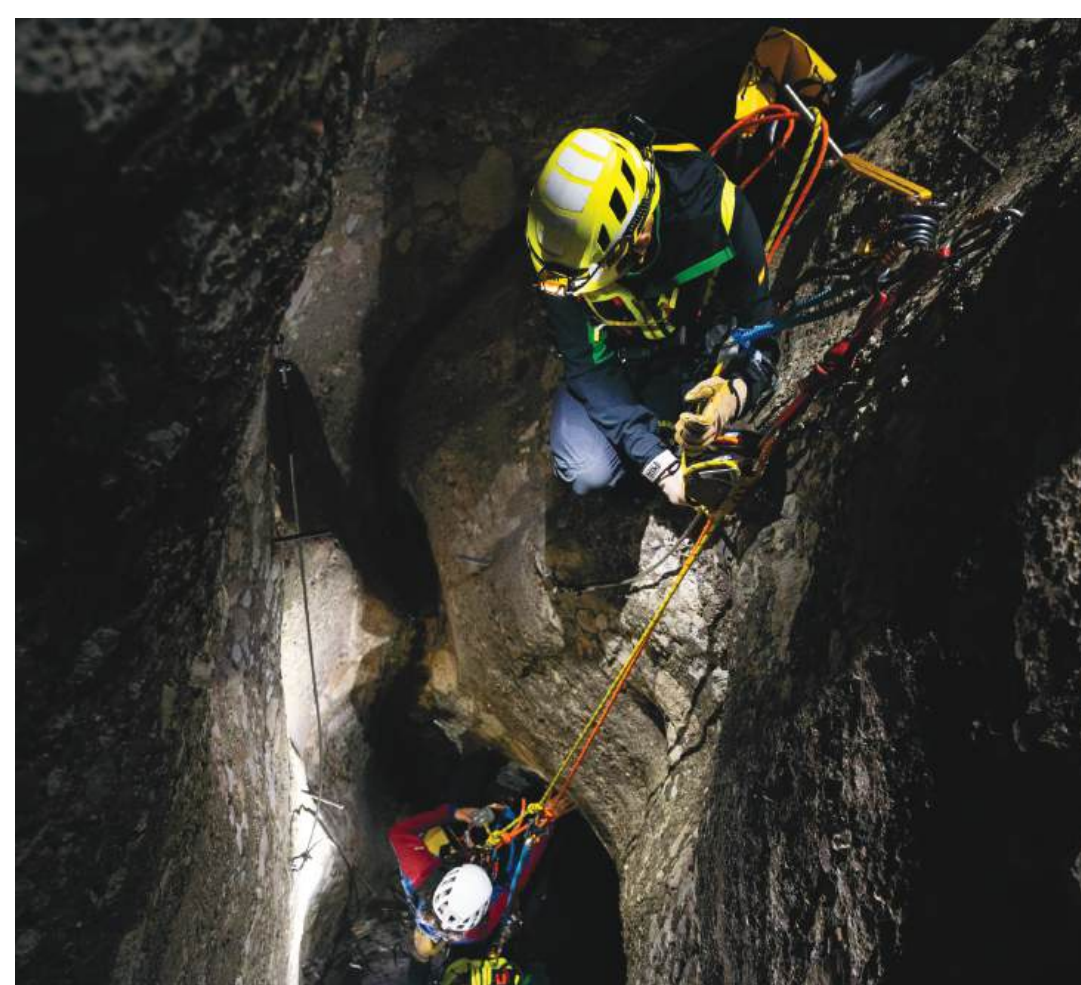
Since 1935 CRO has attended 3,607 incidents:

Cave	777
Cave (assisted by divers)	10
Cave diving	17
Disused mines	17
Other underground	1
Mountain	1,837
Climbing	124
Open water diving	11
Animal - surface	179
Animal - underground	344
CRO search dogs assisting other teams	272
Local	156

This has involved 5,085 people (aged 5 months to 87 years), 533 sheep/lambs, 91 dogs, 13 calves, 9 cows, 1 bullock, 1 Highland heifer, 1 cat and 1 rabbit plus a wide of objects.

The last 5 years

	2025	2024	2023	2022	2021
Total incidents attended (fatalities in brackets)	96 (6)	100 (5)	97 (7)	108 (3)	98 (4)
Cave	9 (1)	5	4	8	4
Mountain	66 (2)	72 (3)	63 (3)	66 (1)	64 (1)
Climbing	0	3	4 (1)	3	4 (1)
Animal	7	0	10	9	10
Local/urban/tarmac	14 (3)	5 (2)	8 (3)	10 (2)	8 (2)
CRO dogs and handlers assisting other teams	10	15	8	12	8



PETZL RESCUE SOLUTIONS

Whether day or night, on a rock face, or at the bottom of a cave, rescuers don't stop. When facing these critical situations rescue workers know that powerful and robust lighting and high performance gear are an absolute necessity. Petzl brings its expertise with products that are completely adapted to the demands of your work.

A technical rescue solution including a XENA® headlamp, NEST stretcher, MAESTRO® Descender with integrated progress capture pulley and JAG haul kit. petzl.com

The CRO Ingleborough Challenge and Clapham Circuit

Run or Walk

Marathon & 12 Mile Trail

Saturday 15th May 2027

Saturday 16th May 2026



J.R. HOPPER & Co.

Leyburn
01969 628936

Hawes
01969 667744

www.jrhopper.com

Leyburn@jrhopper.com

'For Safer In The Dales'

For more info and entry:

www.cro.org.uk/challenge

OGLETHORPE
STURTON &
GILLIBRAND
SOLICITORS